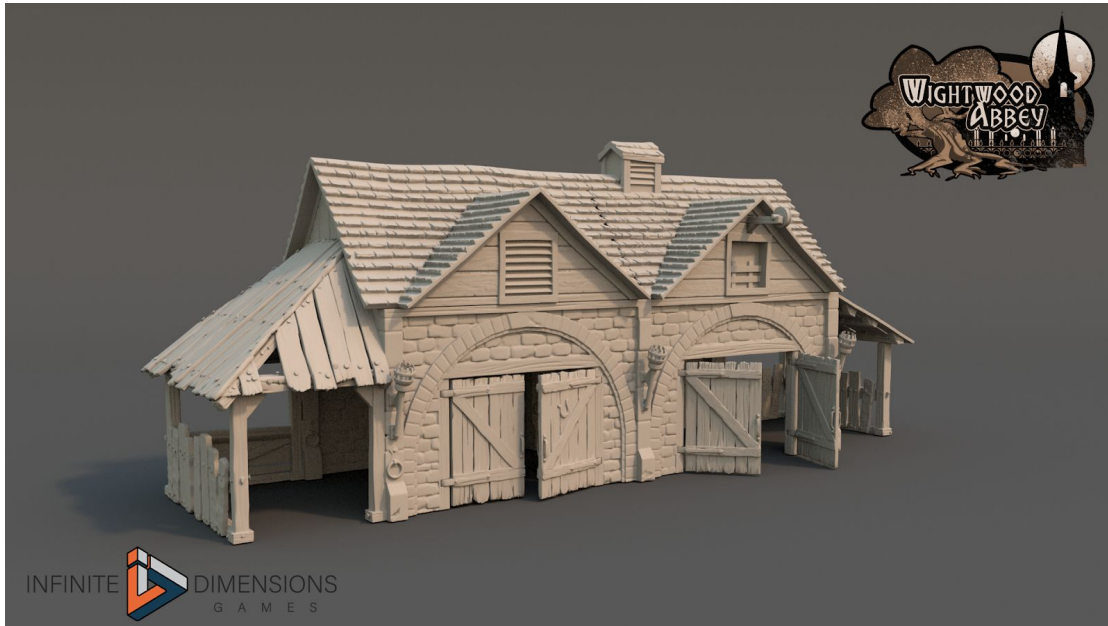


# Wightwood Abbey Stables

## Instructions



## General Information

Prints: **6**

Dimensions: 100% is set to 28mm (1/60)

apx . 14L x 4W x 6H Inches assembled

Printer Requirement: **FDM Printer with a 8"x8" bed**

## Preparation

**Thank you for purchasing the Wightwood Abbey Stables Premium Terrain piece.**

The Stables are part of the Wightwood Abbey Play-set but can be used for any stand alone game. The Stables Have two functioning double doors, detachable roofs and two side pens with detachable tops. The

Stables are a relatively easy print job completed in 4 large and 2 smaller prints. We recommend gluing the two sides of the roof together and the two sides of the ground floor together. Leaving the other parts to come off and allow access to the interior.

To print this you will need an FDM 3D Printer with a bed size of 8"x8" (203x203mm) and enough filament to produce the pieces. If your printer has a smaller bed size you will need to cut certain pieces in your slicer application before printing.

1. Download and unzip your files and keep them in their own well labeled folder for ease of use.
2. We recommend backing up your purchases as they will be accessible

for download only for a limited period of time after your purchase.

3. Print the pieces
4. Clean and prep each piece.
5. Glue the pieces according to our recommended glueing guide.
6. Spray with a primer
7. Paint

For details on how to do these steps please watch our [YouTube video](#).

Remember that your purchase is for your own personal use only as per the terms of the End-User Agreement. Please do not distribute the files or prints.

## Printing Tips

For bed adhesion we strongly recommend printing with a brim of 4 mm or greater.

Every printer is different but in general here are the main settings to pay attention to:

- Brim ON
- Support Material OFF (all our parts have built in support).

- Layer Height of .2mm or less
- Retraction amount and speed
- Acceleration and jerk settings
- Overall Print speed

## Notes

**Scaling down:** To print at 15mm scale reduce all pieces by 50%

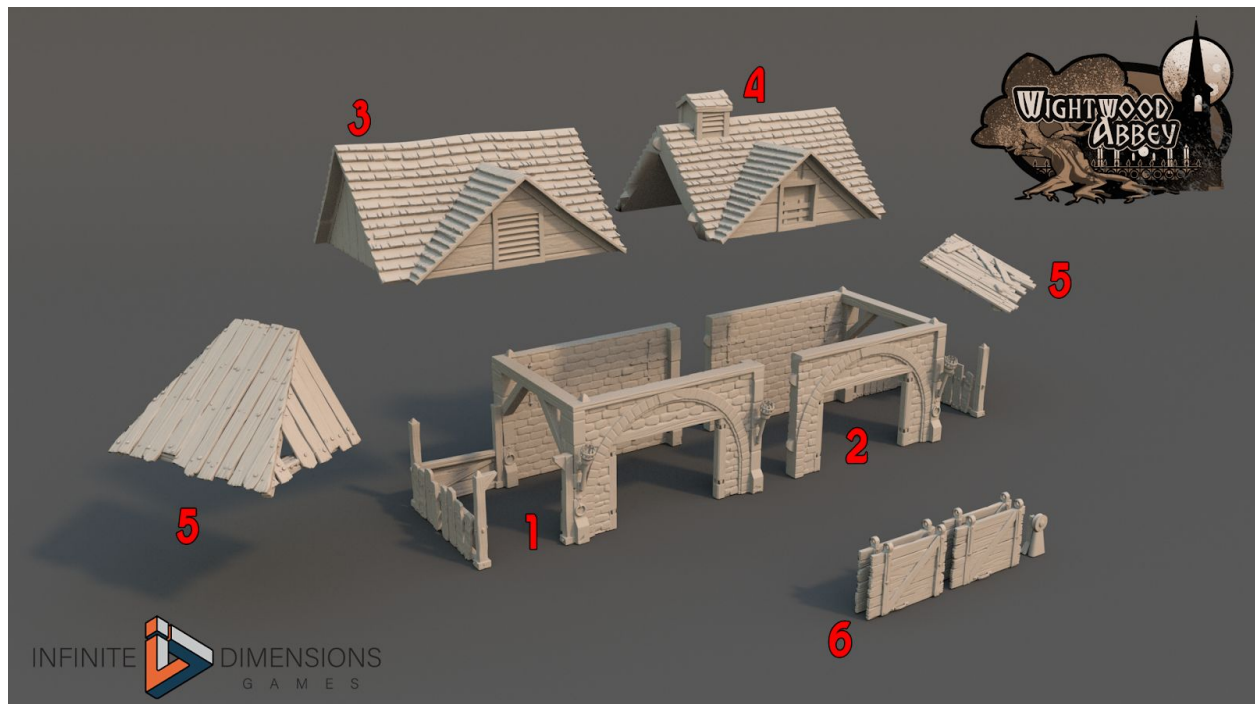
Please note that some functions such as doors will not work at this scale. Also some details may not come out and will need to be cleaned.

**Assembling:** According to the accuracy of your printers some pieces might need to be filed down or trimmed with a hobby knife.

Doors are installed by inserting a piece of 1.75mm filament into the hole to pin the door in place.

Each door is unique so please make sure to use the right door in the right place.

## Prints and Filenames



#	Print	Filename
1	First Floor left	WWA_STBLS_LV1_A.stl
2	First Floor right	WWA_STBLS_LV1_B.stl
3	Roof Left	WWA_STBLS_RF_A.stl
4	Roof Right	WWA_STBLS_RF_B.stl
5	Side Shed Roofs (both print together)	WWA_STBLS_SDS.stl
6	Doors (all Print together)	WWA_STBLS_DRS.stl