

Church Furnishings Set

Instructions



General Information

Prints: 5

Dimensions: 100% is set to 28mm (1/60)

Printer Requirement: FDM printer or SLA printer

Preparation

Thank you for purchasing the Wightwood Abbey Church Furniture Set

The Church Furnishings Set comes with an altar, side shrine for parishioners to light candles, a baptismal font, pews and coal filled braziers. The pews and braziers can be printed out as many times as needed to fill your set.

1. Download and unzip your files and keep them in their own well labeled folder for ease of use.
2. We recommend backing up your purchases as they will be accessible for download only for a limited period of time after your purchase.
3. Print the pieces
4. Clean and prep each piece.
5. Glue the pieces according to our recommended glueing guide.
6. Spray with a primer
7. Paint

For details on how to do these steps please check our [YouTube Channel](#)

Remember that your purchase is for your own personal use only as per the [Terms of Use](#). Please do not distribute the files or prints.

Printing Tips

For bed adhesion we strongly recommend printing with a brim of 4 mm or greater.

Every printer is different but in general here are the main settings to pay attention to:

- Brim ON
- Support Material OFF (all our parts have built in support).
- Layer Height of .2mm or less
- Retraction amount and speed
- Acceleration and jerk settings
- Overall Print speed

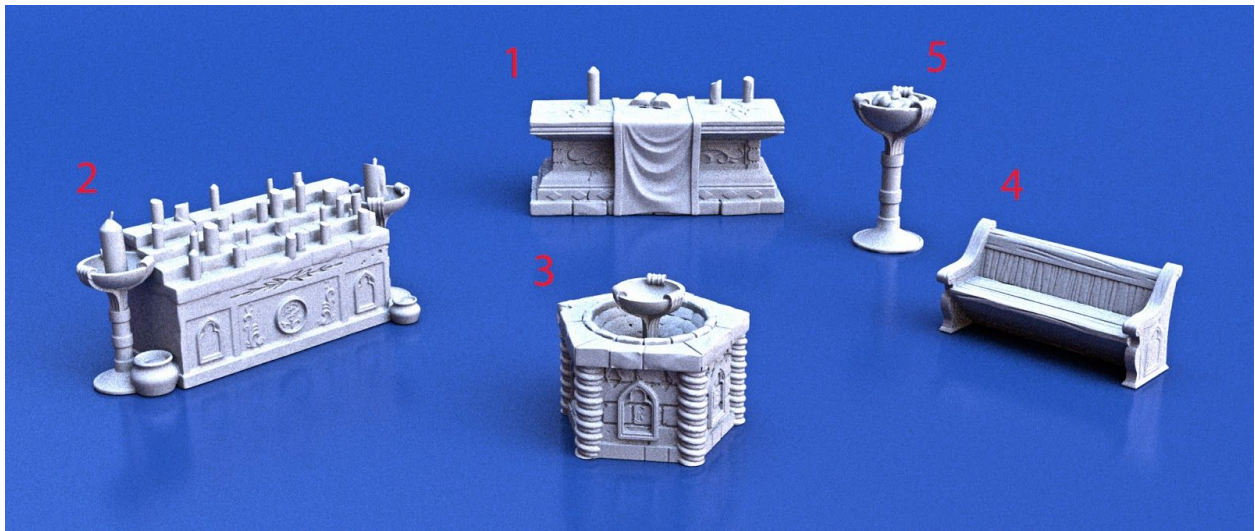
Notes

Scaling down: To print at 15mm scale reduce all pieces by 50%

Please note that some aspects might not work at this scale. Also some details may not come out and will need to be cleaned.

Assembling: According to the accuracy of your printers some pieces might need to be filed down or trimmed with a hobby knife.

Prints and Filenames



#	Print	Filename
1	Altar	WWA_CHRCHFRNT_ALTAR.stl
2	Candle Shrine	WWA_CHRFRNT_CANDLES.stl
3	Baptismal Font	WWA_CHRCHFRNT_FONT.stl
4	Pew	WWA_CHRCHFRNT_PEW.stl
5	Brazier	WWA_CHRCHFRNT_BRAZIER.stl