

# Dormitory Furnishings Set

## Instructions



## General Information

Prints: 7

Dimensions: 100% is set to 28mm (1/60)

Printer Requirement: FDM printer or SLA printer

## Preparation

### Thank you for purchasing the Wightwood Abbey Dormitory Furniture Set

The Dormitory Furniture Set is a pack of furniture pieces originally designed for the Wightwood Abbey Scriptorium. It consists mainly of 4 varieties of sleeping cots that can be stacked to create bunks. The cots print in two parts and are glued together.

1. Download and unzip your files and keep them in their own well labeled folder for ease of use.
2. We recommend backing up your purchases as they will be accessible for download only for a limited period of time after your purchase.
3. Print the pieces
4. Clean and prep each piece.
5. Glue the pieces according to our recommended glueing guide.
6. Spray with a primer
7. Paint

For details on how to do these steps please check our [YouTube Channel](#)

Remember that your purchase is for your own personal use only as per the [Terms of Use](#). Please do not distribute the files or prints.

## Printing Tips

For bed adhesion we strongly recommend printing with a brim of 4 mm or greater.

Every printer is different but in general here are the main settings to pay attention to:

- Brim ON
- Support Material OFF (all our parts have built in support).
- Layer Height of .2mm or less
- Retraction amount and speed
- Acceleration and jerk settings
- Overall Print speed

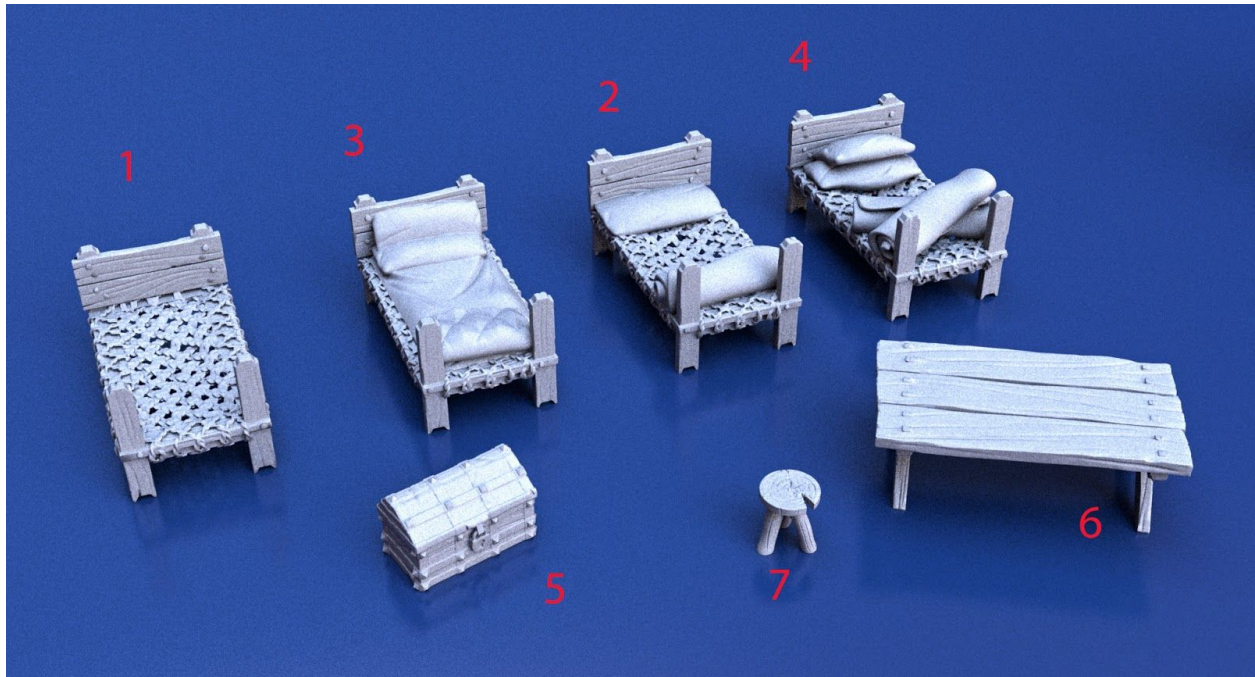
## Notes

**Scaling down:** To print at 15mm scale reduce all pieces by 50%

Please note that some aspects might not work at this scale. Also some details may not come out and will need to be cleaned.

**Assembling:** According to the accuracy of your printers some pieces might need to be filed down or trimmed with a hobby knife.

## Prints and Filenames



#	Print	Filename
1	Cot 1	WWA_DORM_COT1.stl
2	Cot 2	WWA_DORM_COT2.stl
3	Cot 3	WWA_DORM_COT3.stl
4	Cot 4	WWA_DORM_COT4.stl
5	Foot locker/Chest	WWA_DORM_CHEST.stl
6	Table	WWA_DORM_TABLE.stl
7	Stools	WWA_DORM_STOOL.stl